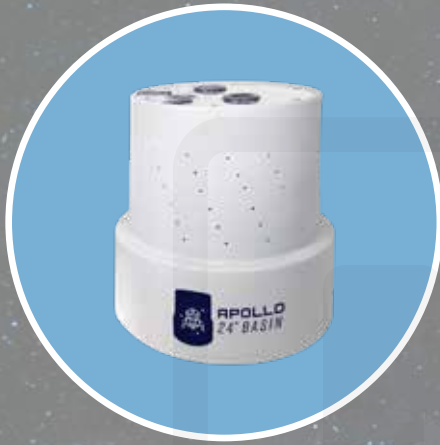


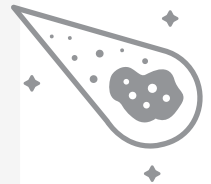
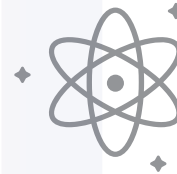


SPACE COLLECTION BASINS



THE ULTIMATE SYSTEM FOR PEACE OF MIND

For basements and crawl spaces, the Space Collection basins are a solid choice for sump pump protection. Their modular design makes it easy to install up to three sump pumps in the basin (16\" excluded) and comes standard with a built-in pump platform that keeps the sediment from harming the pumps providing durability and longevity of your customer's sump pumps.



WHY CHOOSE THE SPACE COLLECTON?

- 1 **Heavy-duty**, impact-resistant construction. Bell-shaped design for **superior anchoring**.

Lid features a **pre-installed Dranjer drain**, sealed cord pass-throughs, & discharge line grommets

4

- 2 **Elevated sump platform** protects the pump against debris and sediment.

Gasket sealed to protect against water vapor, odors, and radon gas.

5

- 3 **Two-piece, clear lid** for convenient inspection and access to pump equipment.

Factory-installed, pre-drilled **weep holes for localized drainage**. Made in the USA.

6



Nash Sample
YOUR LOGO HERE

CONTACT US TODAY!